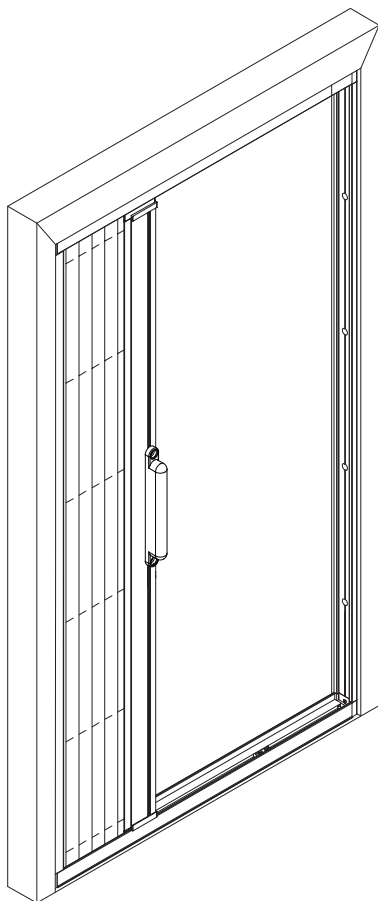






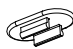






Installation Instructions

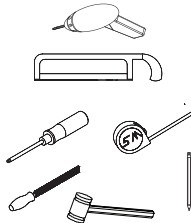
VALENCIA - Retractable Pleated Insect Screen



Read the installation instructions carefully before proceeding



Screen Cassette  1x			Tracks  2x			Door Handle  2x		
7x 	7x 	5x 	1x 	4x 	10x 	10x 	1x 	

	Tools required for installation * Hacksaw * Hammer * Measuring Tape * Phillip and flat head screwdrivers * Pen * Cordless drill * Metal filer
---	---

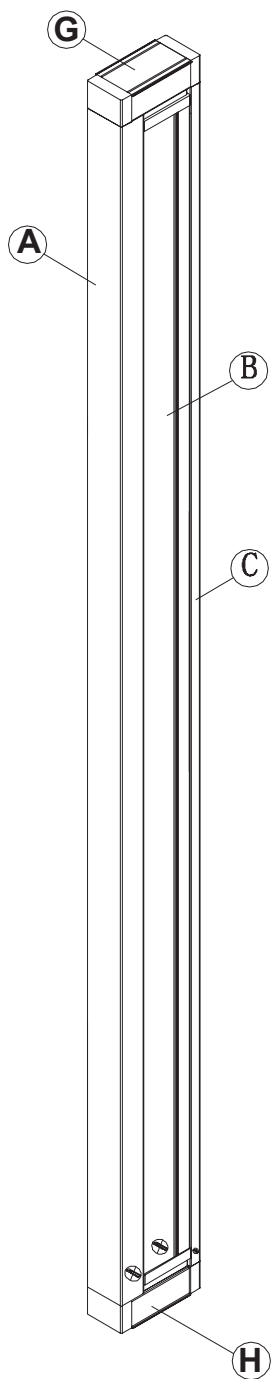
Parts for installation of 2 retractable insect screens doors



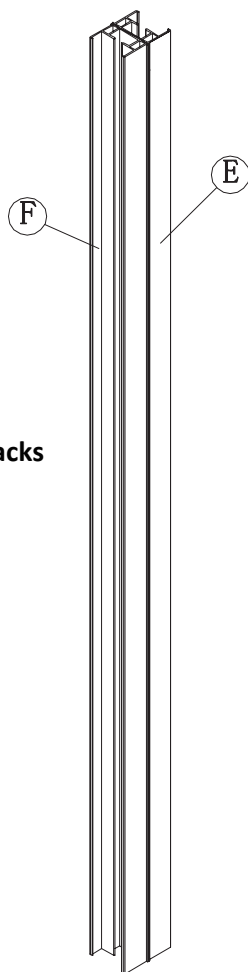
Only use these connectors if you are installing 2 retractable insect screens. As shown in page 20. When you purchase 2 retractable insect screens you will have a total of 2 connectors (i.e. 1 x is supplied with each screen)

1

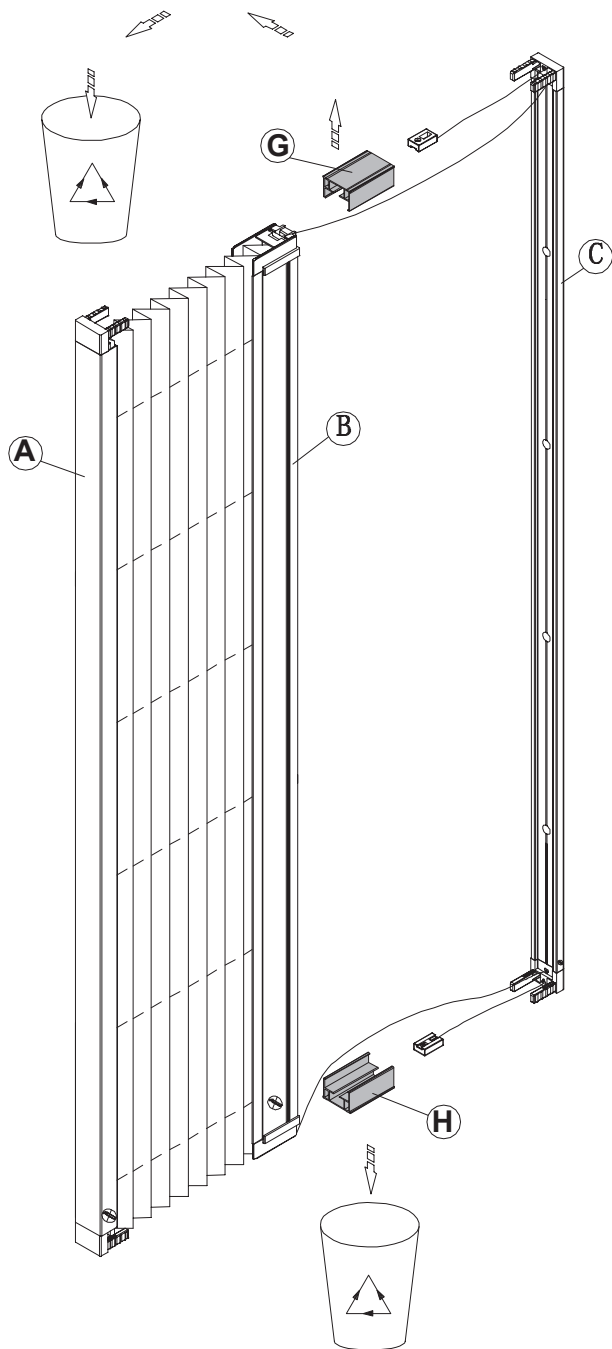
Screen
Cassette



Tracks

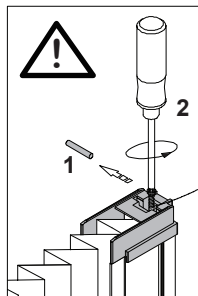


2 Remove & dispose G & H from the screen cassette

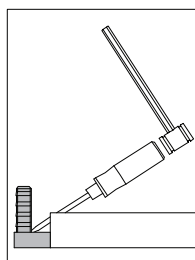
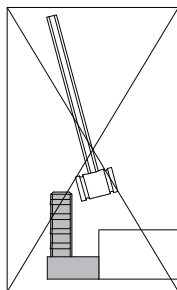


Dispose off in bin

3 Detach the end caps from both ends of A, B, and C



To remove end caps from B
1 --> Remove pin
2 --> Remove the screw
Keep them aside you will need them in STEP 10



A

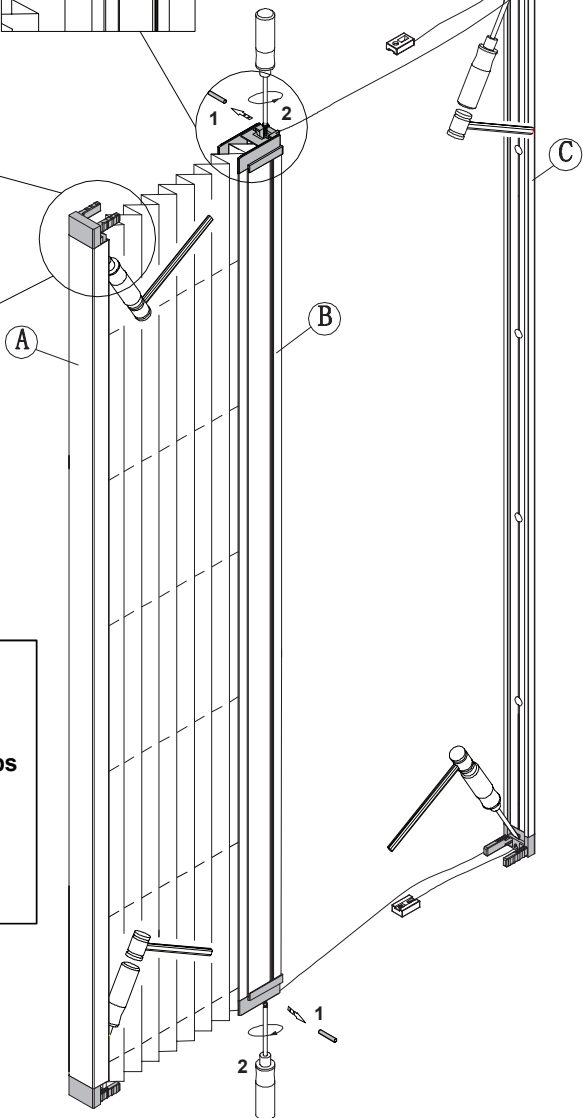
B

C

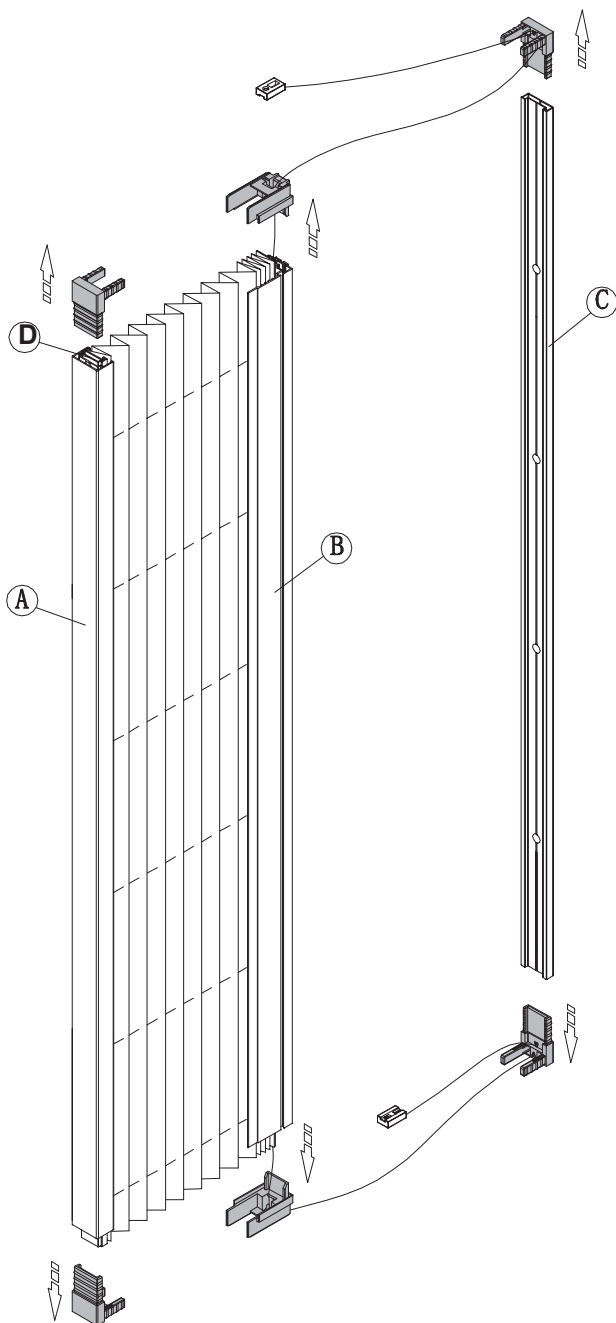


Do Not hammer directly onto the ends when removing the end caps

Place a screwdriver at the bottom end of the cap and tap it off with a hammer

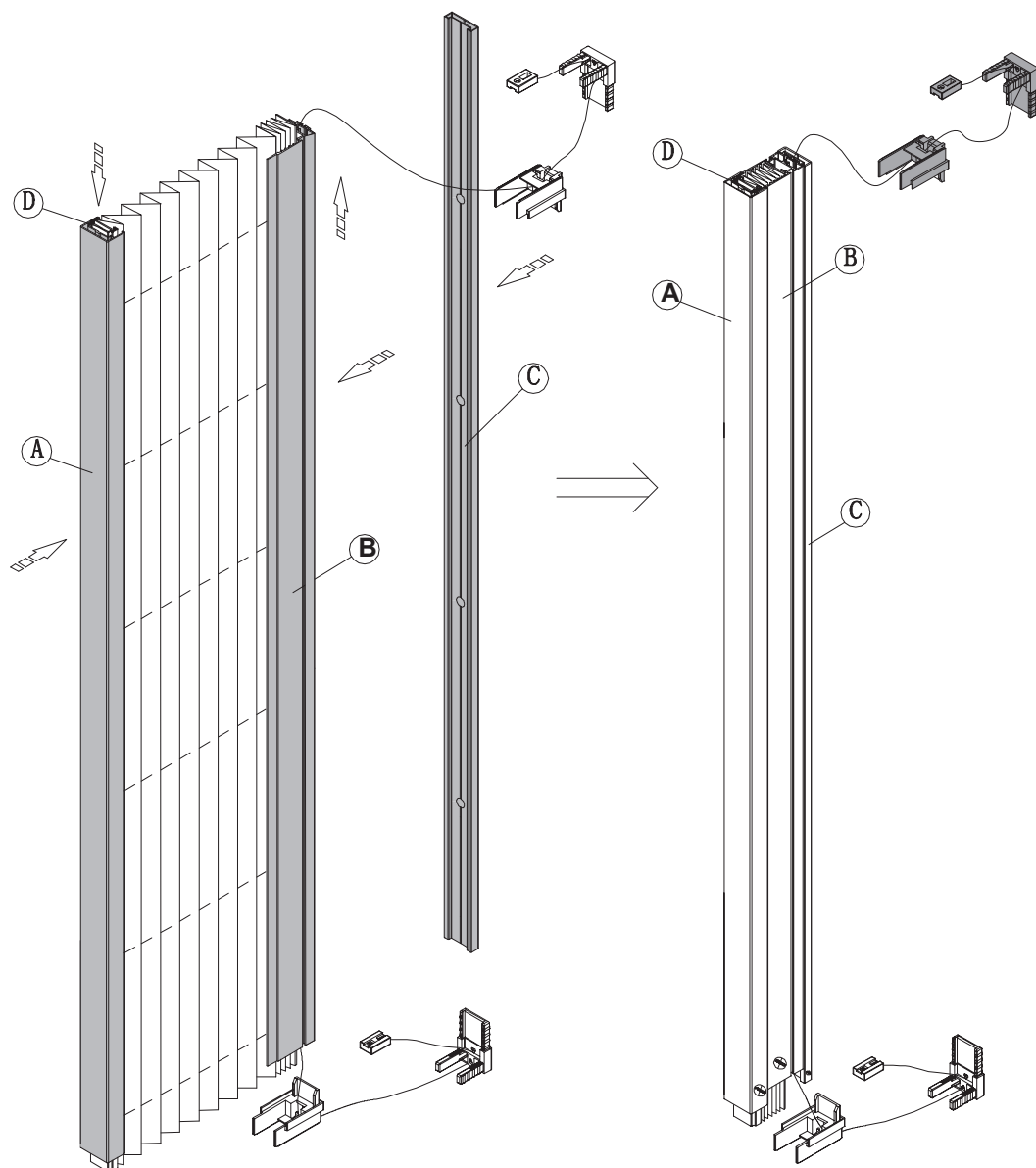


- 4** Release the end caps from both ends of A, B and C and keep them aside for STEP 9



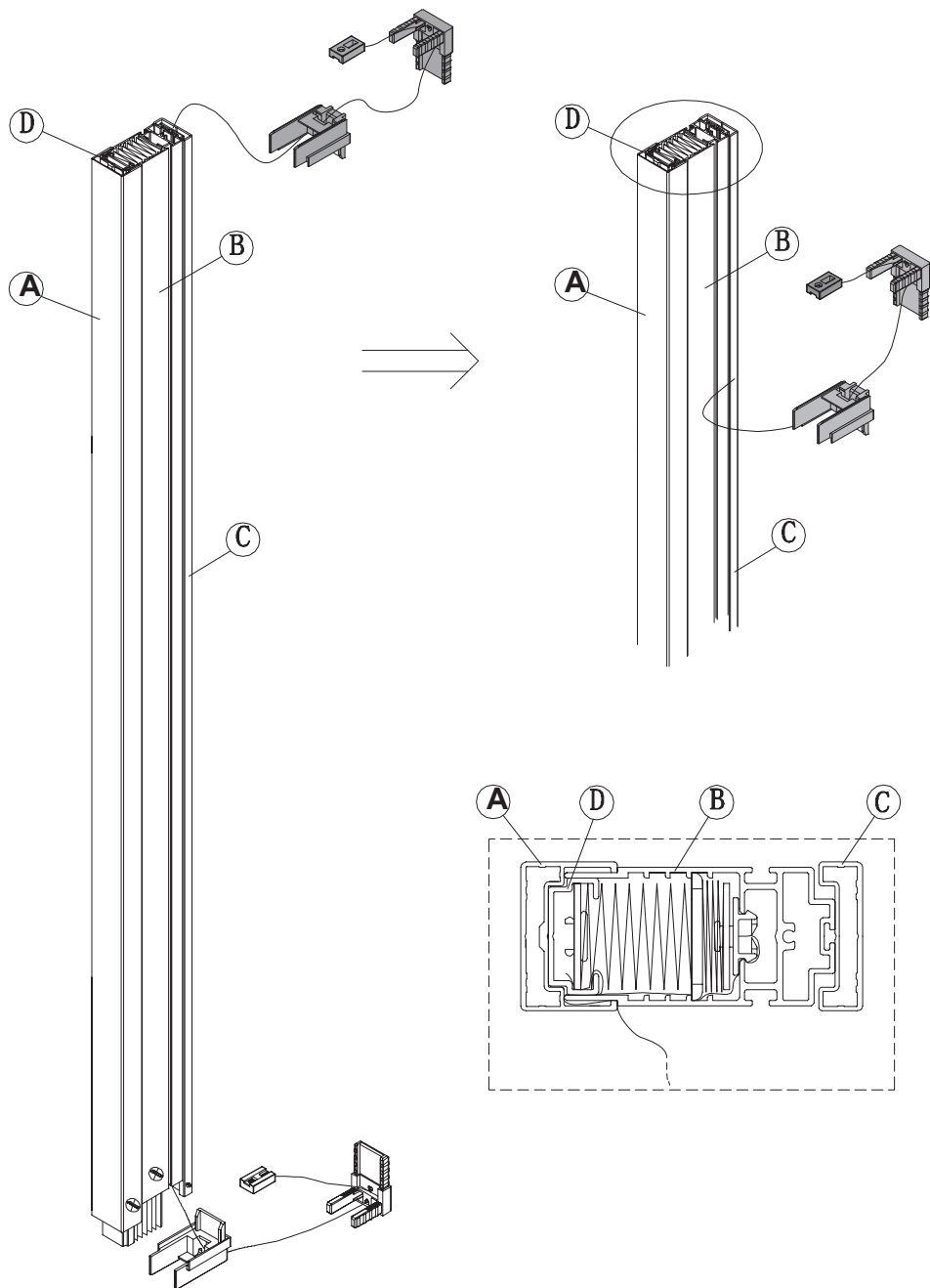
5

Once the end caps are released, align the cutting ends of A, B and C.

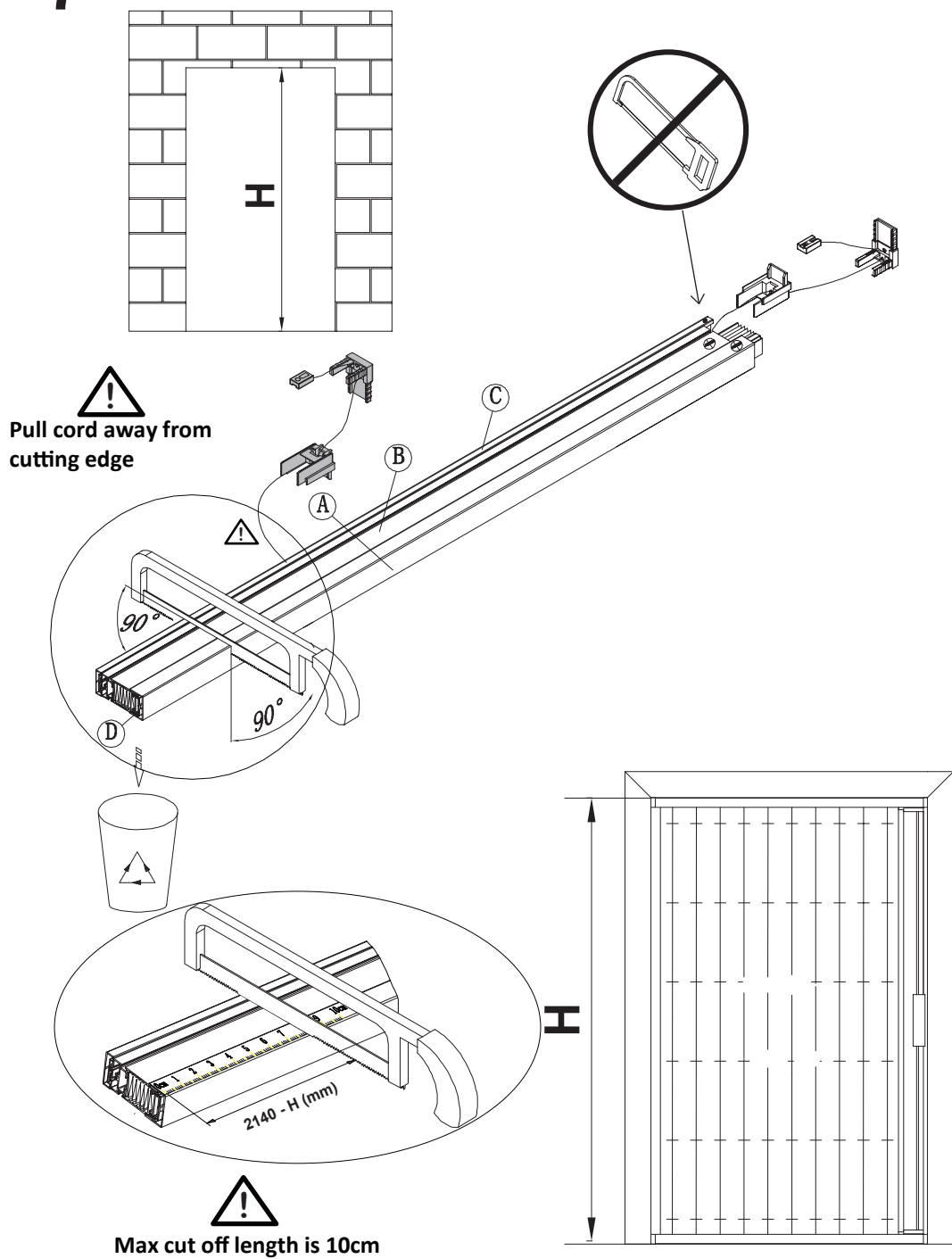


6

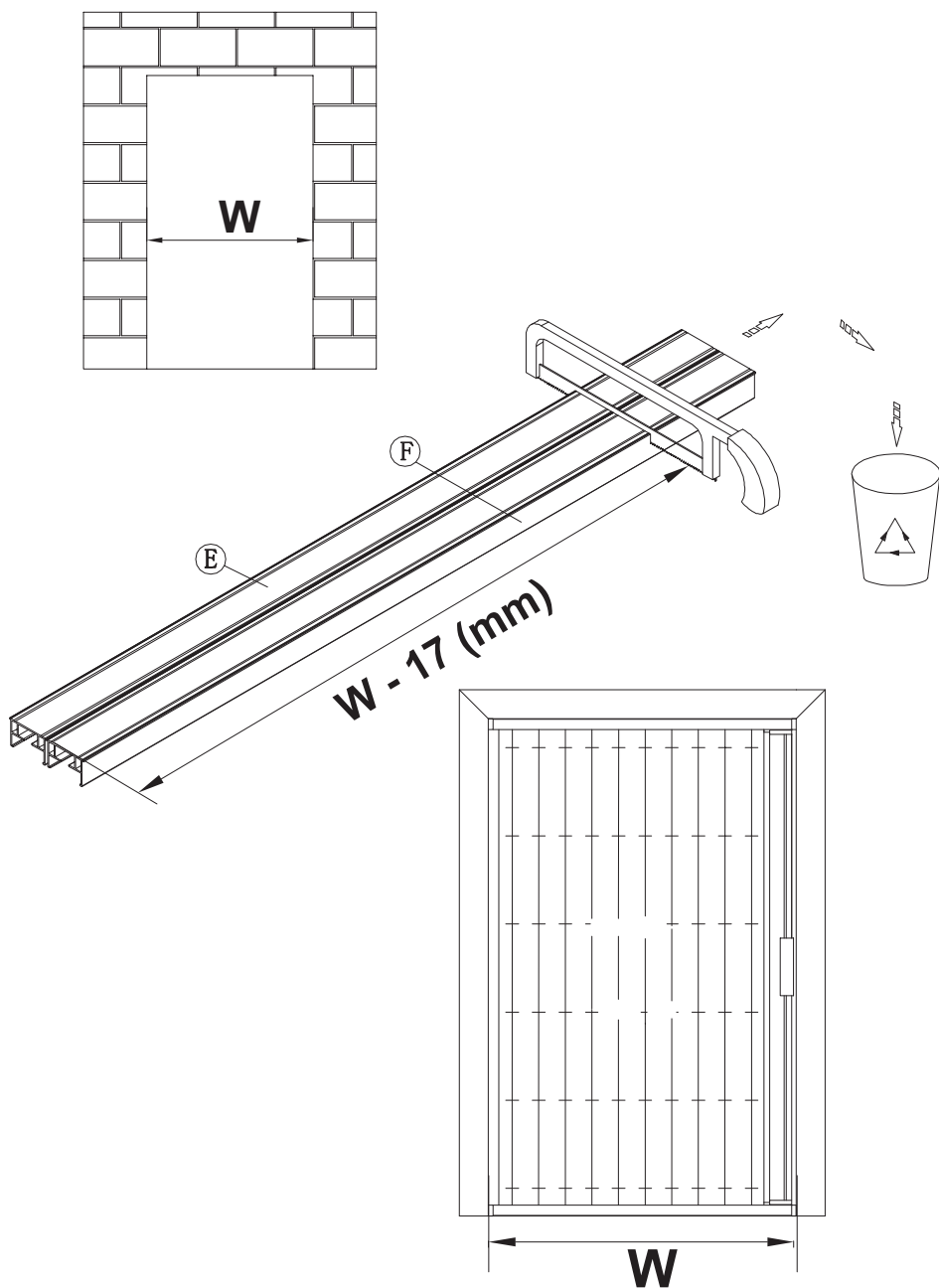
Before cutting pull the cords away from the cutting edge



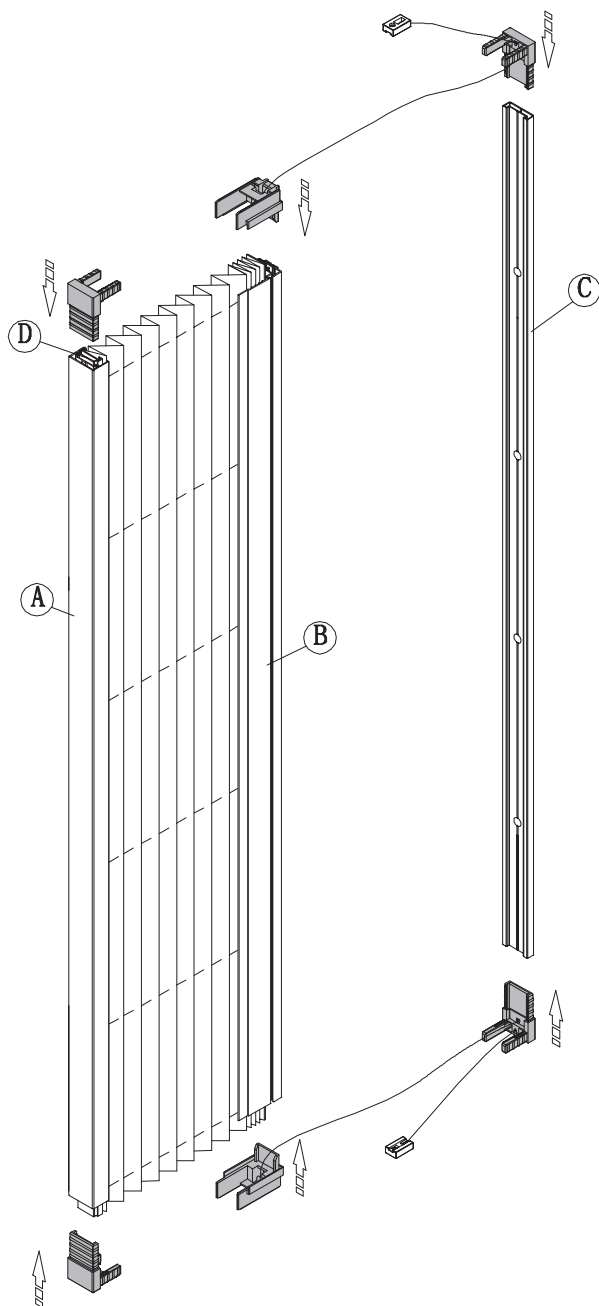
7 Cutting the screen cassette



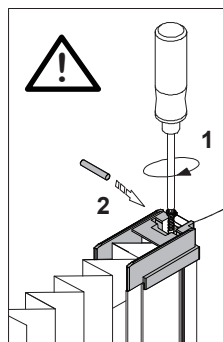
8 Cutting the top & bottom tracks to required size



9 Replace all end caps (from STEP 4) back into both ends of A, B and C



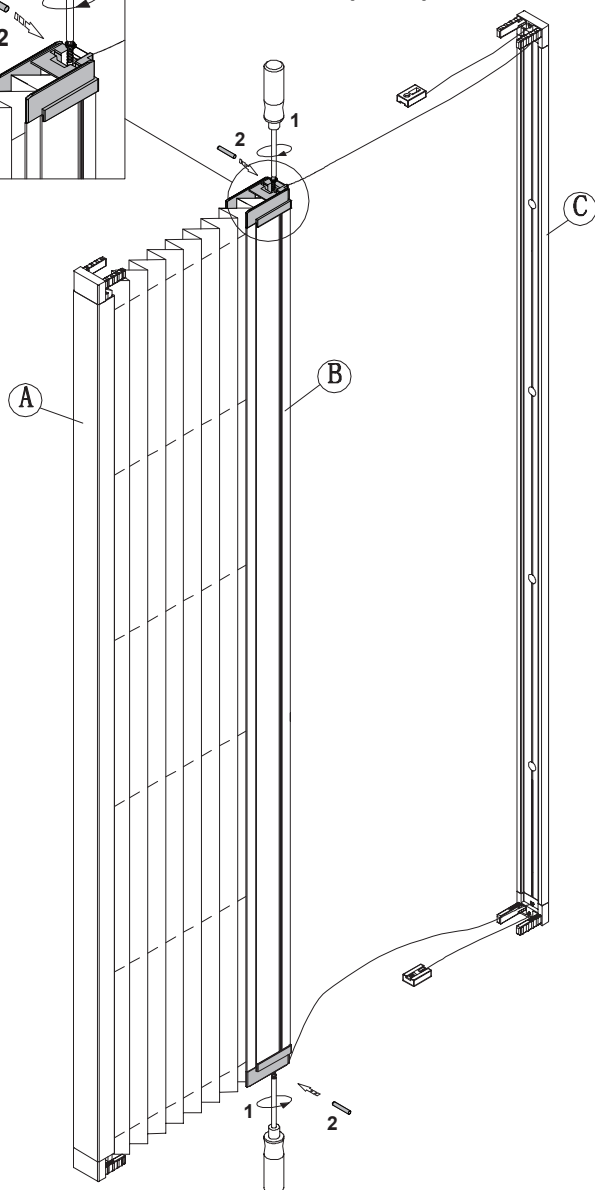
10 To replace end caps on B



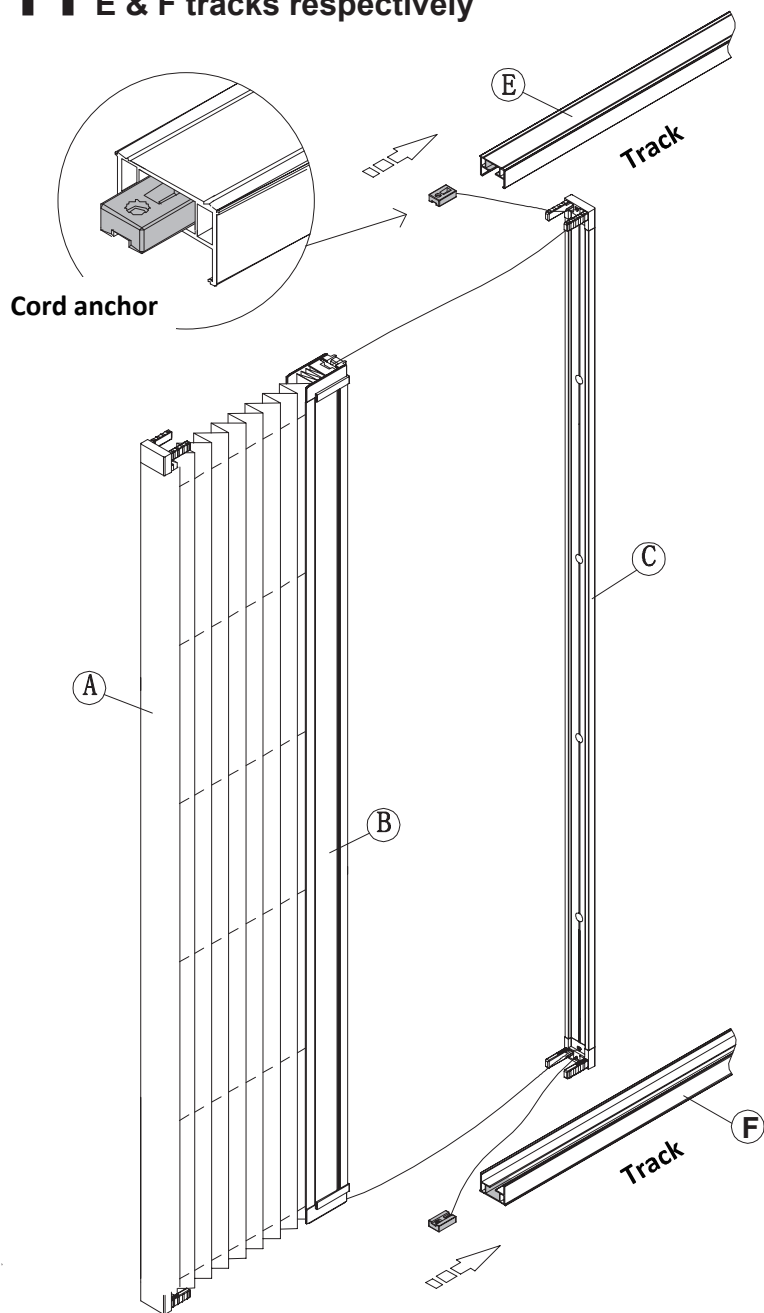
Replace screw & pin that was put aside (in STEP 3)

1 --> Replace screw

2 --> Replace pin

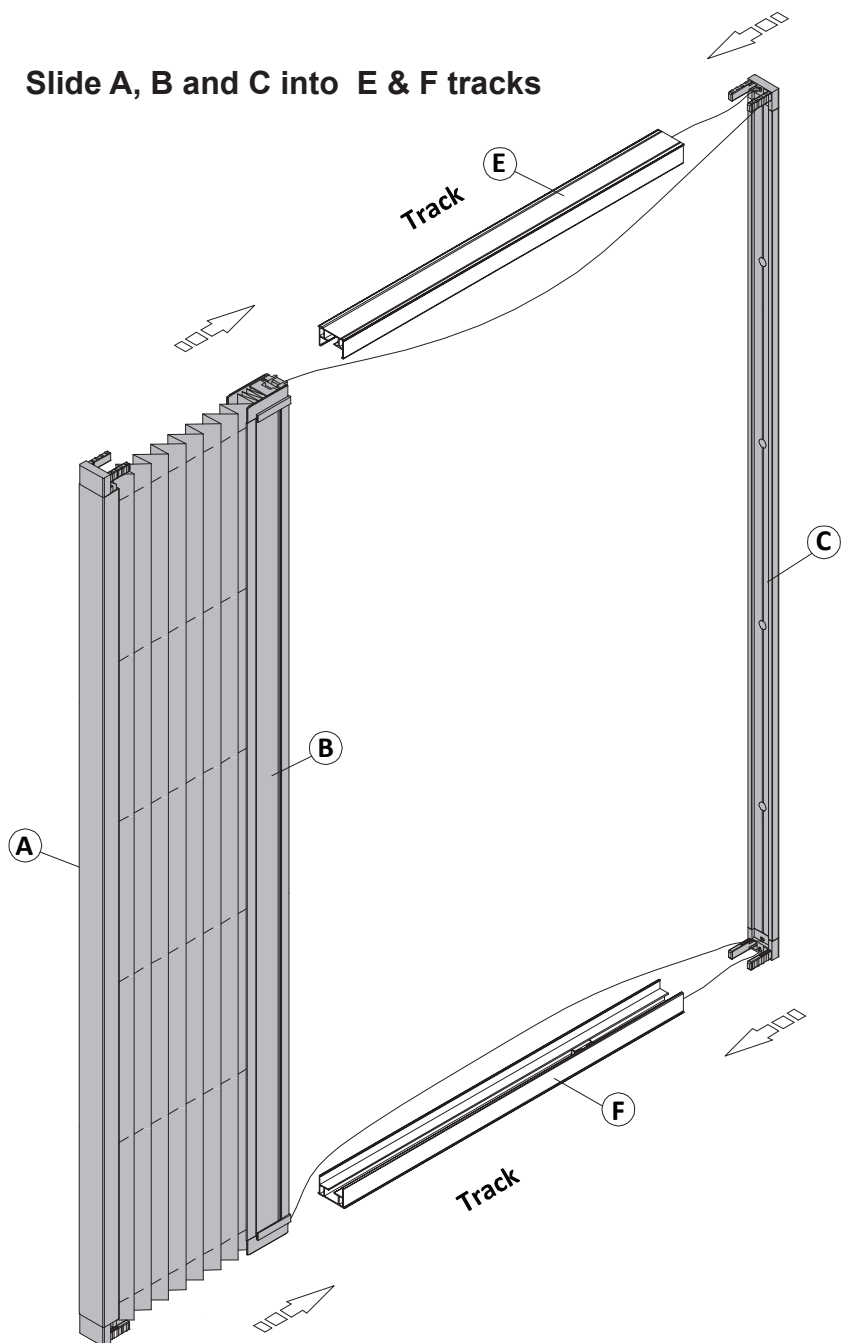


11 Slide the cord anchor with the cord into E & F tracks respectively



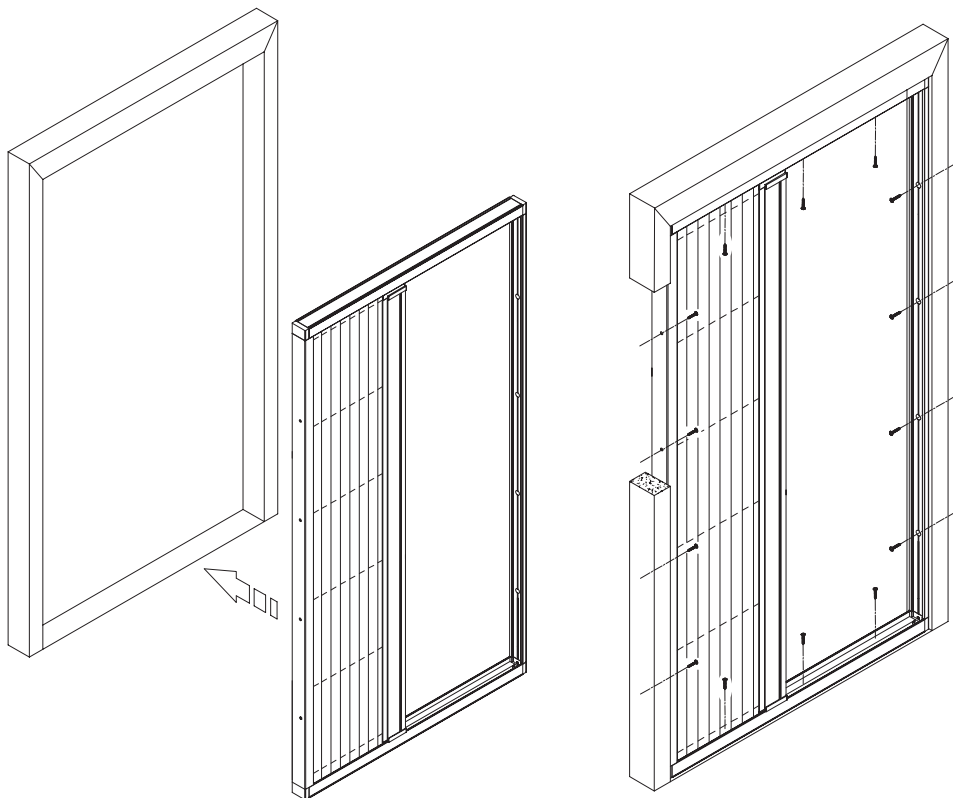
12

Slide A, B and C into E & F tracks

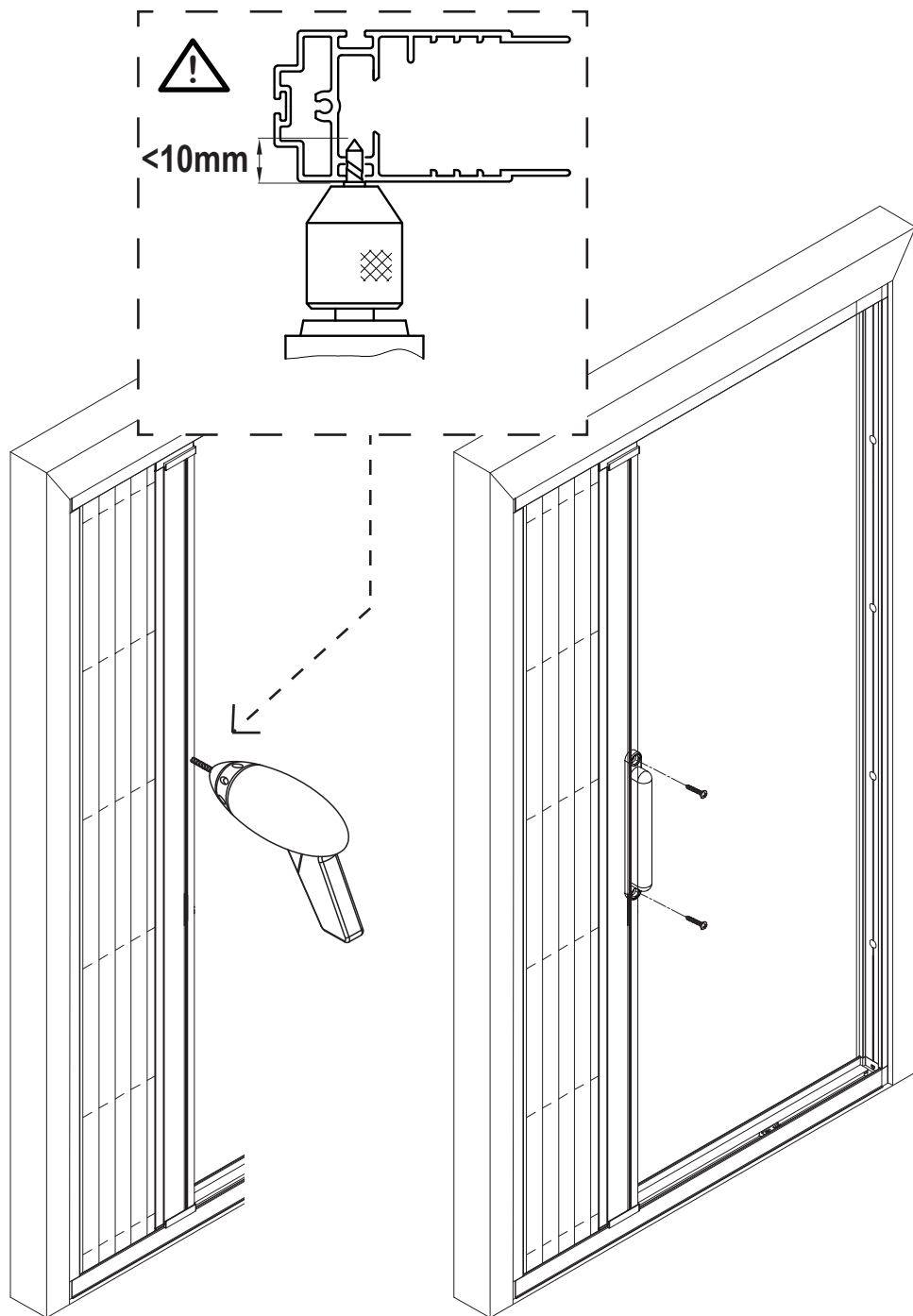


13

Mount the screen onto the desired area & secure with screws



14 Installing the handle

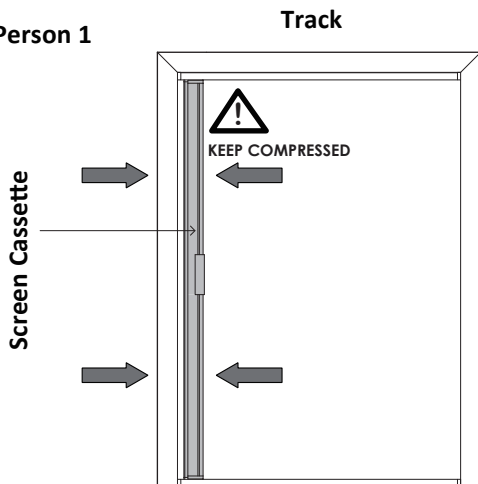


15

Tightening cord anchor on bottom track & repeat on top track

(**Recommendation : 2 persons for this step)

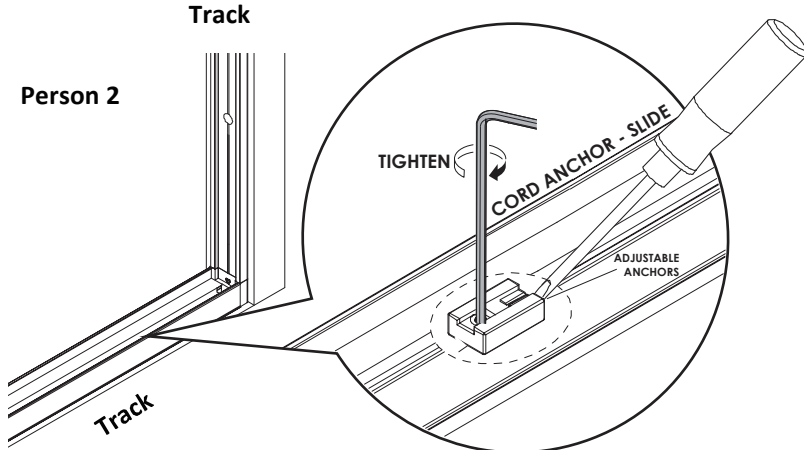
Person 1



Person 1 :

Ensure that the screen cassette is tightly compressed throughout the tightening process of the cord anchors (on the bottom & top tracks)

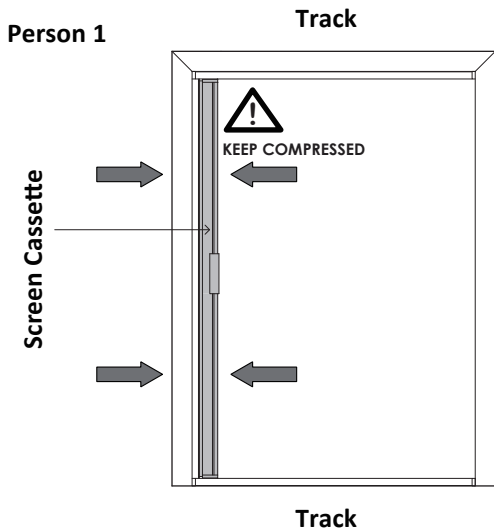
Person 2



Person 2 :

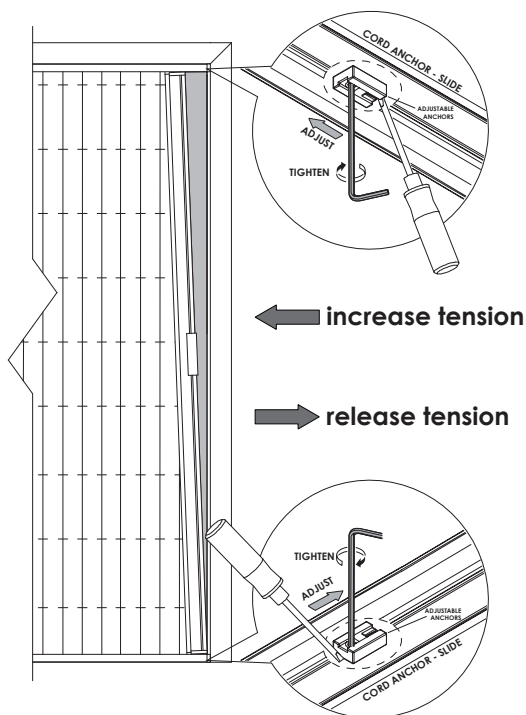
- * Make sure that person 1 has the screen cassette tightly compressed
- * Slide cord anchor on the bottom track towards the screen cassette (as far as you can)
- * Tighten the cord anchor with the allen key
- * Repeat this process for the cord anchor on the top track

16 Adjusting cord anchors (Only optional - if screen does not close as shown)



Person 1 :
Ensure that the screen cassette is tightly compressed throughout the tightening process of the cord anchors (on the bottom & top tracks)

If the screen does not close as shown

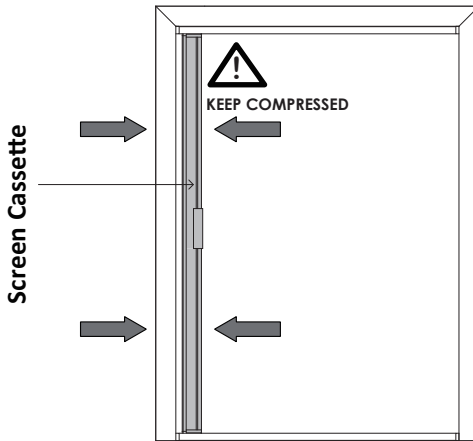


Person 2 : To adjust tensions as indicated
* Make sure that person 1 has the screen cassette tightly compressed
* Slide the cord anchors as shown in the diagrams

17 Adjusting cord anchors (Only optional - if screen does not close as shown)

Person 1

Track

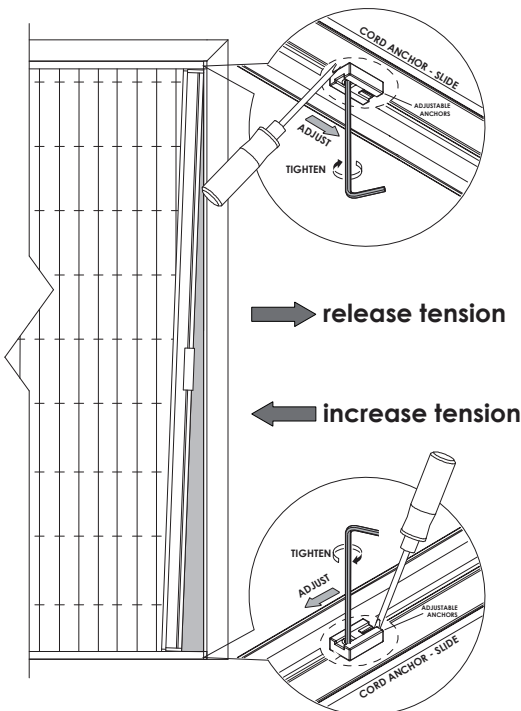


Track

Person 1 :

Ensure that the screen cassette is tightly compressed throughout the tightening process of the cord anchors (on the bottom & top tracks)

If the screen does not close as shown

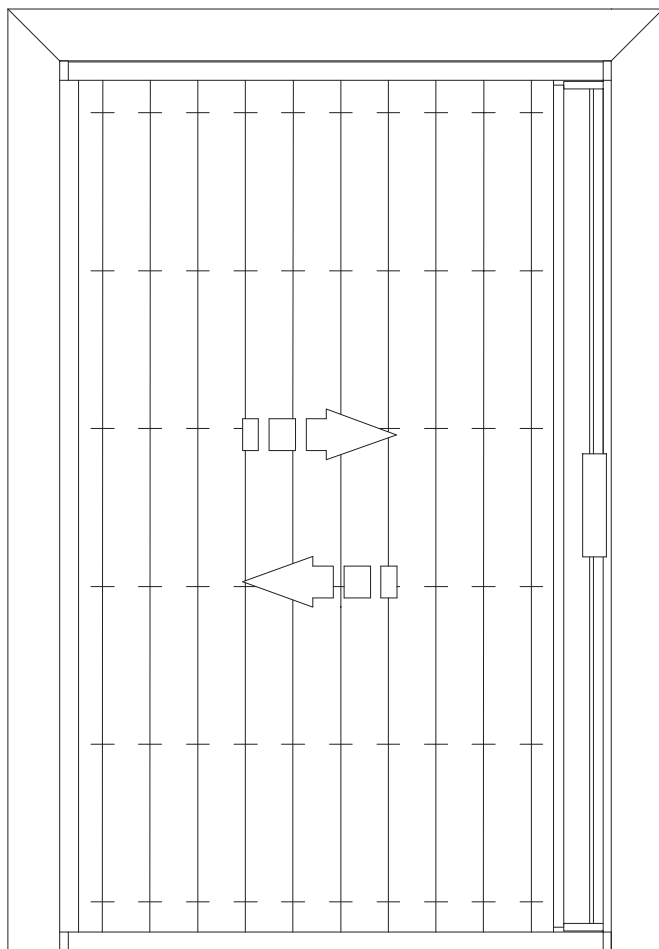


Person 2 : To adjust tensions as indicated

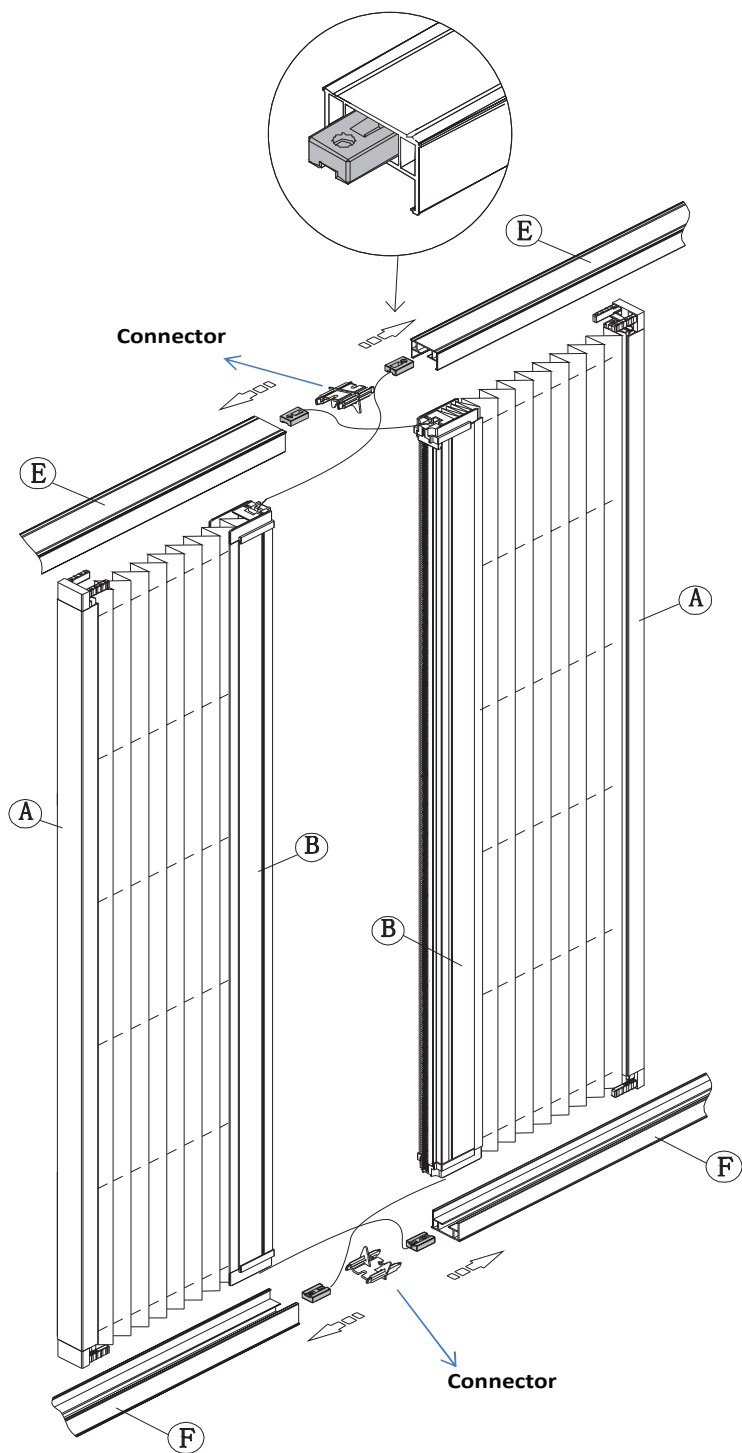
* Make sure that person 1 has the screen cassette tightly compressed

* Slide the cord anchors as shown in the diagrams

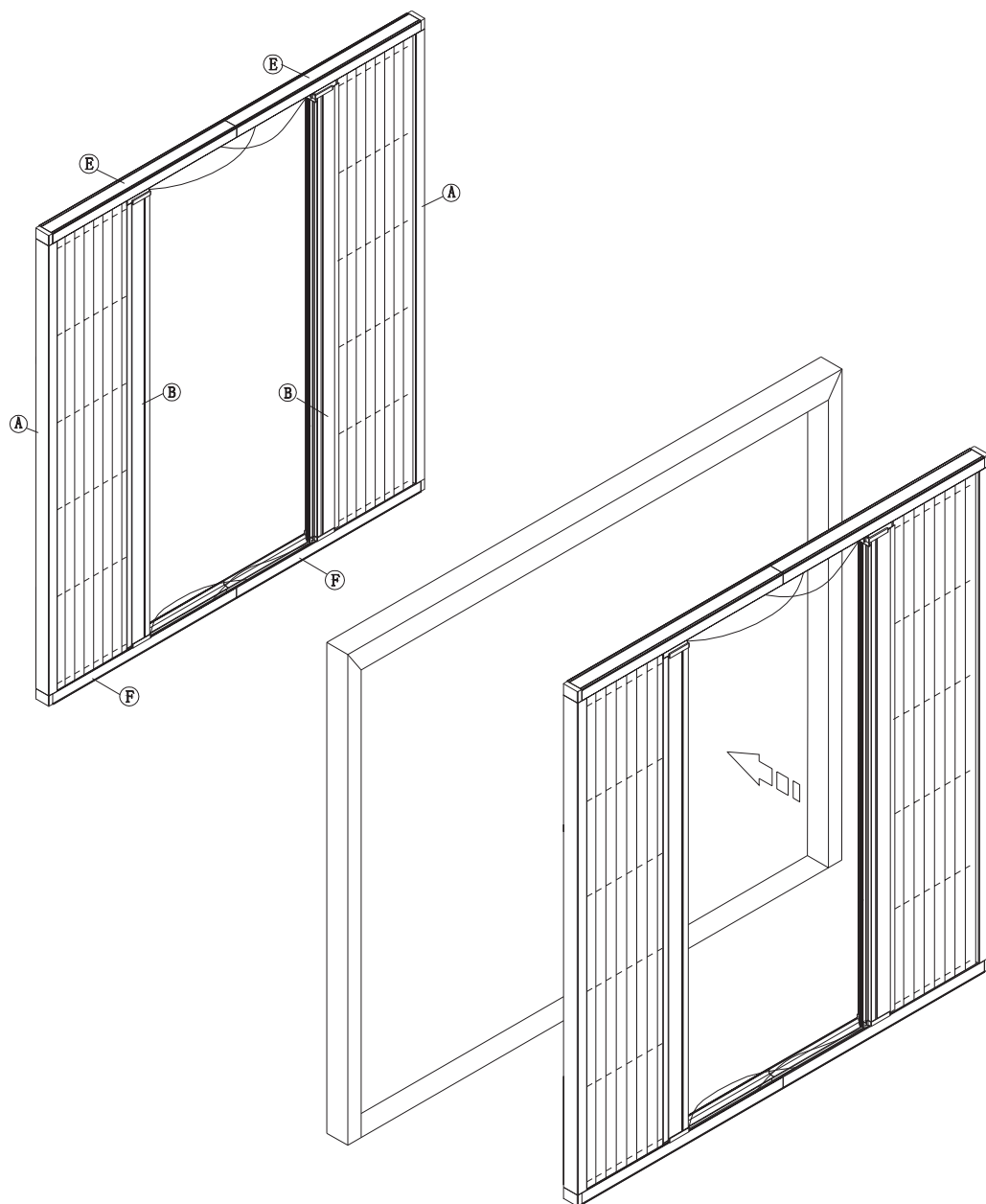
18 Installation complete



19 FOR INSTALLING 2 Retractable Screens

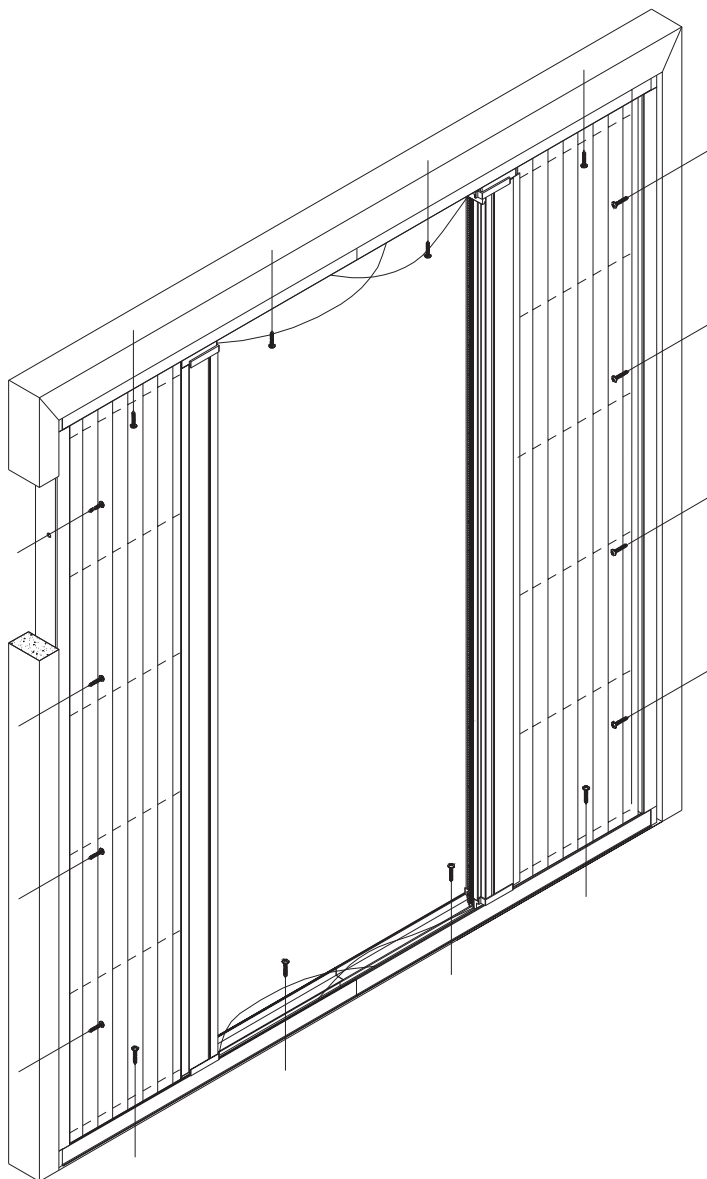


20 Mounting the double screens onto the desired area

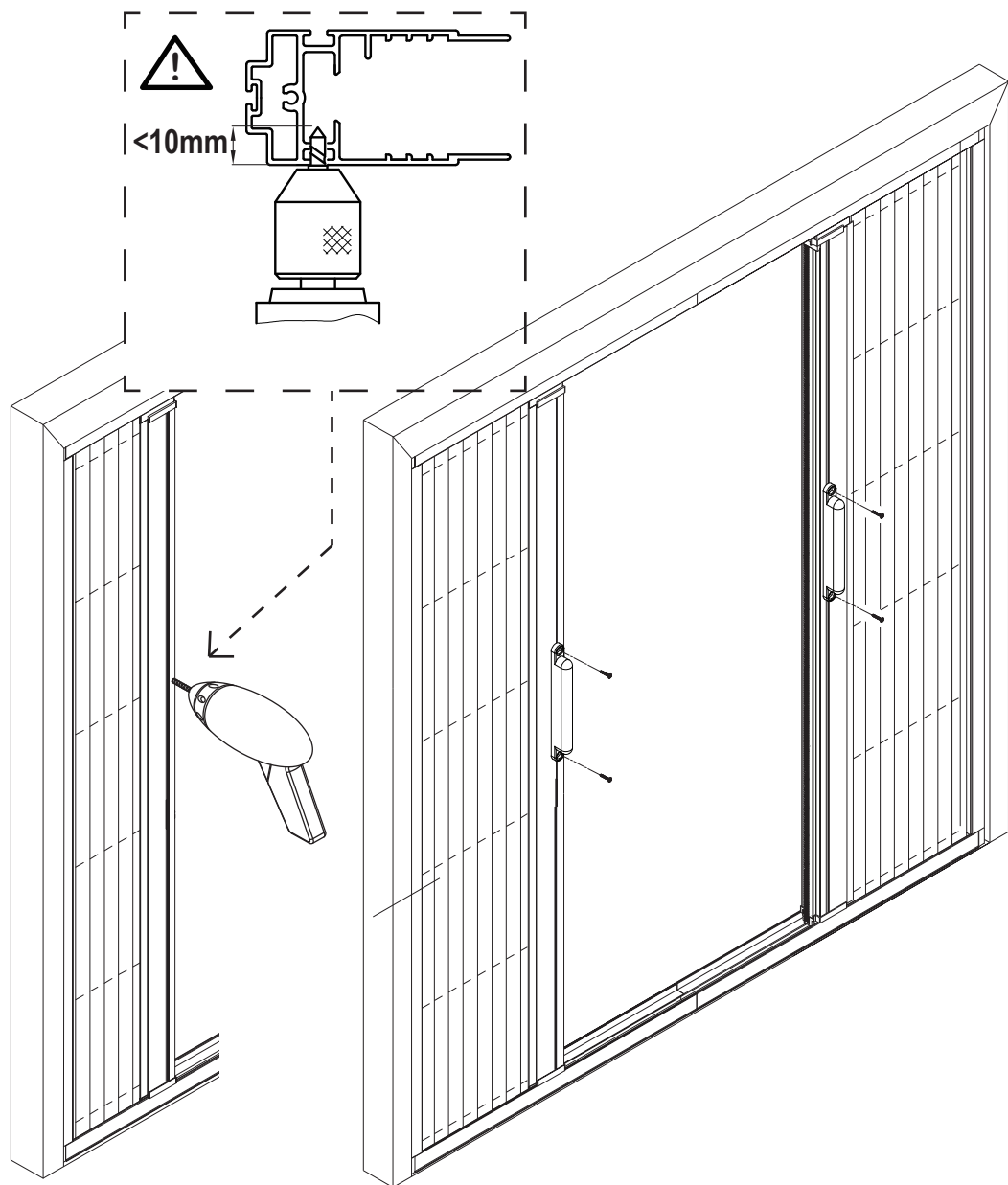


21

Secure the doors with screws



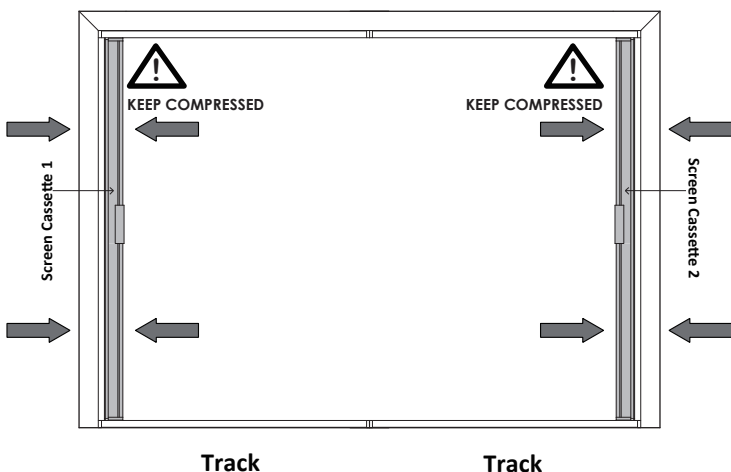
22 Installing the handles



23 Securing cord anchors

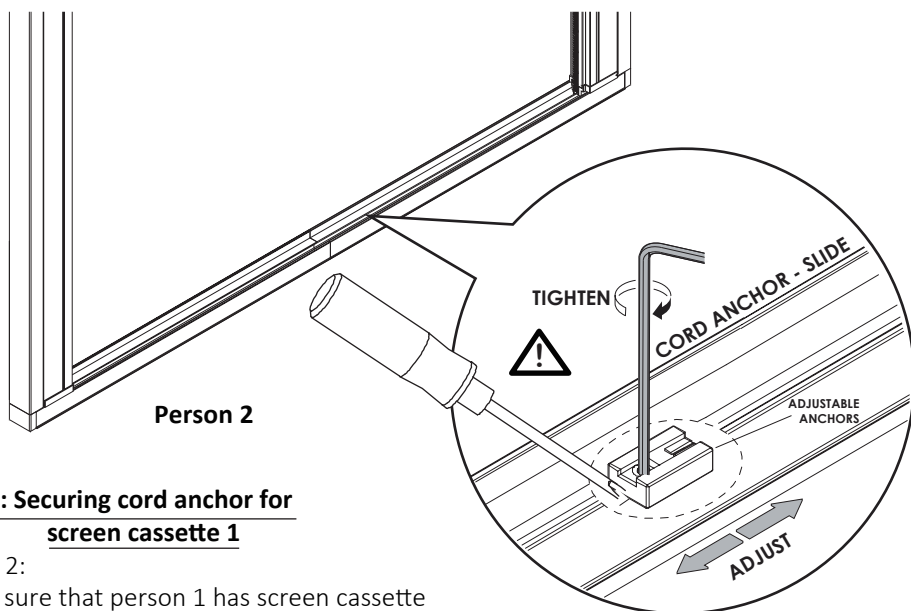
(**Recommendation : 2 persons for this step)

Person 1



Step 1 : Securing cord anchor for screen cassette 1

Person 1 :
Ensure screen cassette 1 is tightly compressed throughout the tightening process of the cord anchors (on the bottom & top tacks)



Step 1 : Securing cord anchor for screen cassette 1

Person 2:

- *Make sure that person 1 has screen cassette 1 tightly compressed
- *Slide cord anchor on screen cassette 1 on the bottom tracks towards screen cassette 2 (as far as you can)
- *Tighten the cord anchor with the allen key
- * Repeat this process for the cord anchor on the top track for screen cassette 1

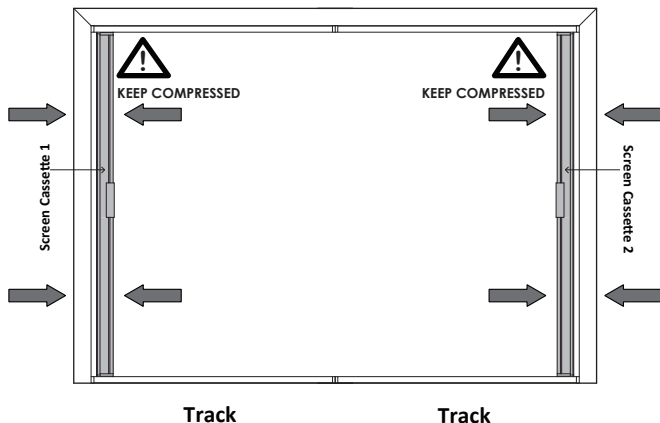
Step 2 : Securing cord anchor for screen cassette 2

Person 1 and Person 2 :

Repeat the same process as in Step 1 but this time with screen cassette 2

24 Adjusting cord anchors (Only optional - If the screens do not close as shown)

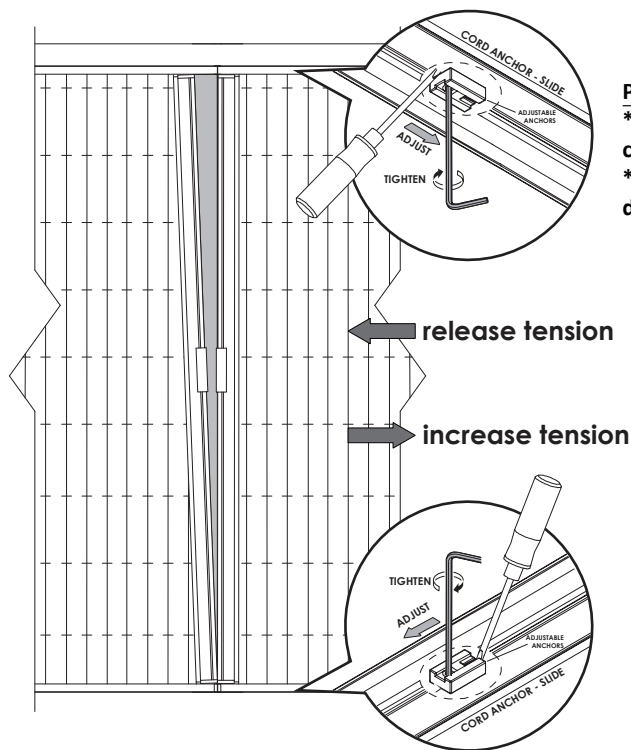
Person 1



Step 1 : Securing cord anchor for screen cassette 1

Person 1 :
Ensure screen cassette 1 is tightly compressed throughout the tightening process of the cord anchors (on the bottom & top tacks)

If the screens do not close as shown

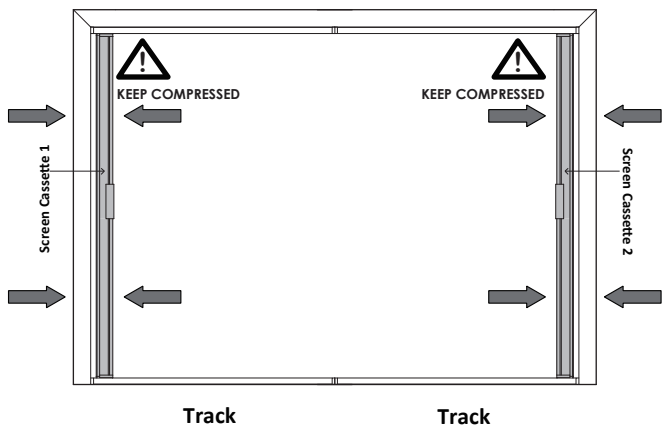


Person 2 : To adjust tensions as indicated

- * Make sure that person 1 has the screen cassette tightly compressed
- * Slide the cord anchors as shown in the diagrams

25 Adjusting cord anchors (Only optional - If the screens do not close as shown)

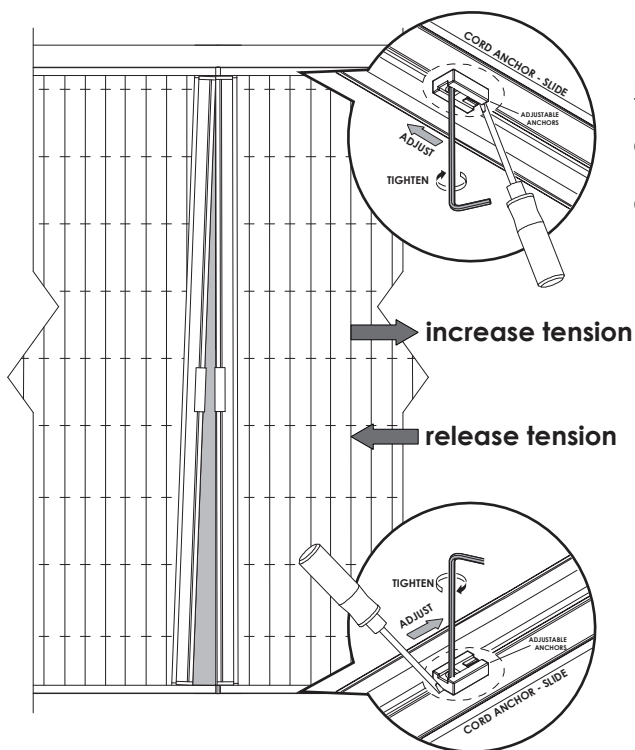
Person 1



Step 1 : Securing cord anchor for screen cassette 1

Person 1 :
Ensure screen cassette 1 is tightly compressed throughout the tightening process of the cord anchors
(on the bottom & top tacks)

If the screens do not close as shown



Person 2 : To adjust tensions as indicated

- * Make sure that person 1 has the screen cassette tightly compressed
- * Slide the cord anchors as shown in the diagrams

26 Installation complete for double screens

